

# Mottling-Test™

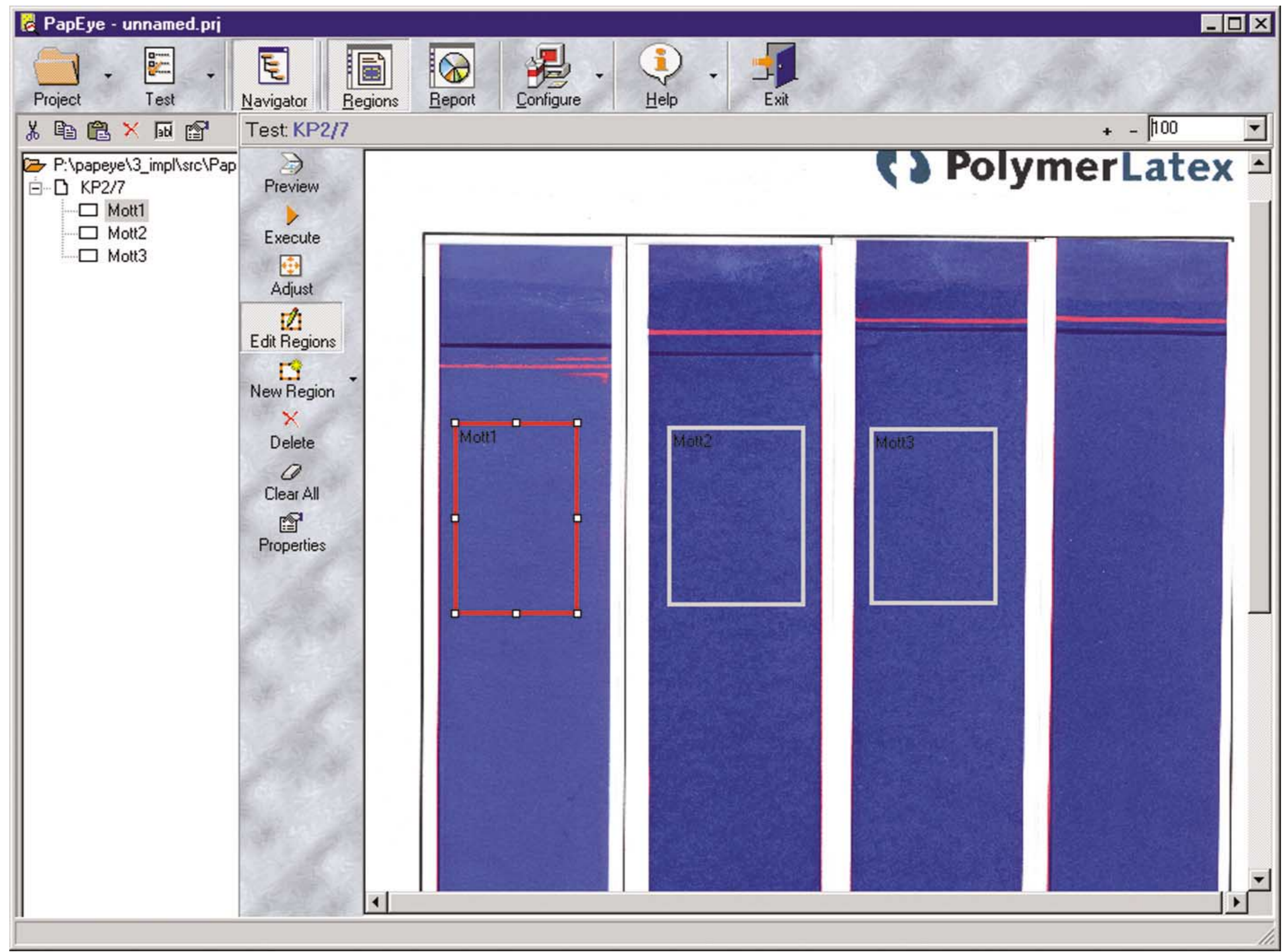
Analysis and evaluation of marbled surfaces

## Computers for quality inspection

The modul Mottling-Test is a system for computer-based analysis of material surfaces. By using modern mathematical methods, visualization and objective evaluation of mottling-effects (cloud formation) and similar marbling effects is possible for the first time.

## No never-ending rows of numbers

The analysis results in a single value that is sufficient for characterizing the intensity of the mottling and the degree of deviation from the standard. This lets users make direct comparisons of various material samples in the Mottling-Test, draw conclusions regarding sample quality, and sort the results of analysis accordingly.



Benutzeroberfläche mit eingescannten Teststreifen

## Further evaluation included

Of course, for detailed studies, users can also take advantage of other methods of analysis. The results obtained can be processed in tabular form or depicted by concise graphics.

## Open Management

The Mottling-Test's integrated database permanently stores all surface images and results of analysis. Practical classification of the material samples ensures open management even with extensive series of tests.

The Mottling-Test is flexible registering the data from the image. And with the help of scanners and CCD-Cameras more analysis modules can be integrated, so that the direct use in the production is possible.

## Major Features

Surface analysis for detecting and evaluating mottling effects  
 Computation of the mottling value, which represents a measurement of deviation from the standard  
 Visualization of results.

Integrated database for images and results of analysis  
 Results of analysis can be exported for the use in other programs (e. g. Excel).

### SYSTEM REQUIREMENTS

- Windows 95, Windows NT 4.0 or higher
- PC with Pentium II processor, 233 MHz
- SVGA graphic card with minimum 600x800 dots in high color 64K